

# Tech Specs

UniFi UISP Branding

[WiFi](#) [Switching](#) [Cloud Keys & Gateways](#) [Camera Security](#) [Door Access](#) [Managed VoIP](#) [New](#)

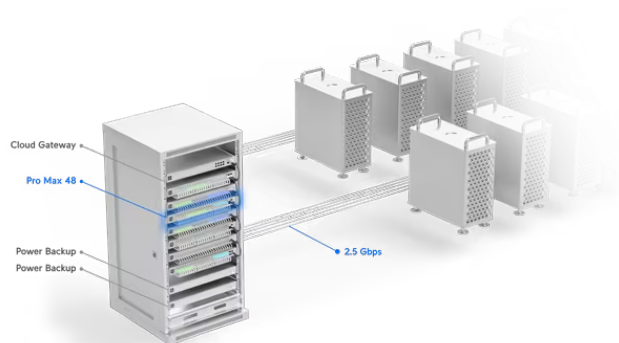
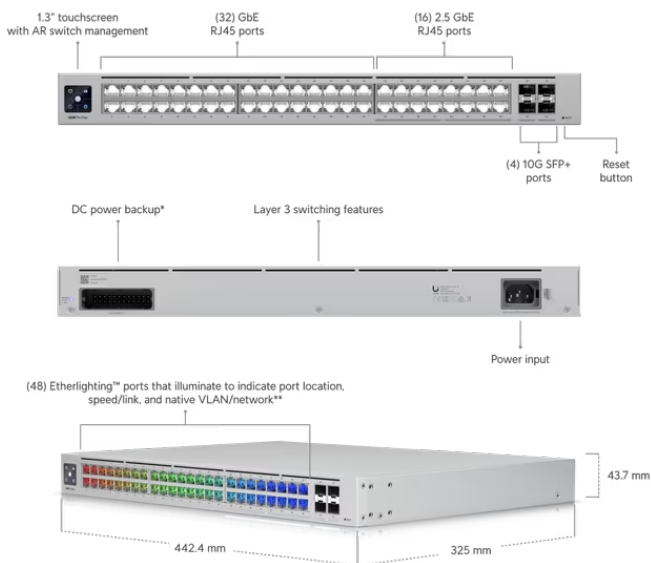
Switching > [Pro Max 48](#)

Datasheet

In The Box

Marketing Images

Installation Guide



\*Require UniFi Power Backup.  
\*\*Pair with UniFi Etherlighting Patch Cables for optimal brightness.

## Mechanical

### Dimensions

442 x 325 x 44 mm (17.4 x 12.8 x 1.7")

### Weight

Without mounting brackets: 4.8 kg (10.6 lb)  
With mounting brackets: 4.9 kg (10.8 lb)

### Enclosure material

SGCC steel

## Hardware



<b>Management interface</b>	Ethernet In-Band
<b>Networking interface</b>	(32) GbE RJ45 ports (16) 1/2.5 GbE RJ45 ports (4) 10G SFP+ ports
<b>Total non-blocking throughput</b>	112 Gbps
<b>Switching capacity</b>	224 Gbps
<b>Power method</b>	(1) Universal input, 100—240V AC, 50/60 Hz (1) USP-RPS DC input
<b>Power supply</b>	AC/DC, internal, 100W
<b>Supported voltage range</b>	100—240V AC
<b>Max. power consumption</b>	100W
<b>LCM display</b>	(1) 1.3" touchscreen
<b>Button</b>	Factory reset
<b>Operating temperature</b>	-5 to 40° C (23 to 104° F)
<b>Operating humidity</b>	10 to 90% noncondensing
<b>Certifications</b>	CE, FCC, IC

---

## Etherlighting™

<b>Ethernet</b>	Locating Speed/link Native VLAN/network
<b>SFP+</b>	Locating Speed/link Native VLAN/network

---

## LEDs

<b>System</b>	Status
<b>RPS</b>	Status

---

## Application Requirements

<b>UniFi Network</b>	Version 8.0.24 and later
----------------------	--------------------------

**Stay in Touch**



[Terms and Conditions](#) | [Terms of Service](#) | [Privacy Policy](#) | [Return Policy](#) | [Cookies Settings](#)

© 2024 Ubiquiti, Inc. All rights reserved.